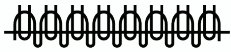


SHEFFIELD PRODUCT SPECIFICATIONS



Sheffield style was born from a demand for a soft vintage rug finish. Made using New Zealand wool singles, the combination of loop and a higher cut pile reminds us of our local farming district near the factory, Sheffield. As the name depicts, it replicates fields in the Canterbury summers where the typical lush pasture is more sparse.

The making of the Sheffield is a two-stage process. Firstly, a simple loop pile base is tufted. Then this is 'over tufted' in a vertical direction in a cut pile finish to produce an uneven, broken grid-like effect. The loop and cut can be tufted in the same colour to create a subtle textural finish as there is a slight colour variation between the side and cut of the yarn. For a more dramatic & aged look, contrasting colours work really well and create an attractive rug.

PRODUCT TYPE: Tufted

COMPOSITION: 100% NZ Wool 380/1 tex

COLOUR: choose 2 colours

FINISH: loop base, cut pile over tuft

PILE HEIGHT: 9-13 mm

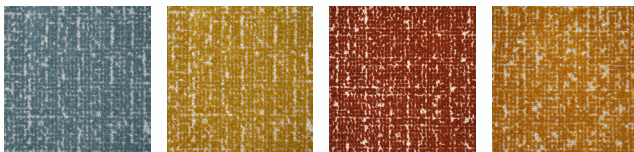
TOTAL HEIGHT: approx. 15 mm

TOTAL YARN WEIGHT: approx. 2.6 kg/m²

BACKING MATERIAL: Polypropylene, Action back

ADHESIVE: Latex

EDGING: Standard rolled edge and tape



COLOUR

Custom colour of your choice.

DISCLAIMER

Dimensions may vary by up to 3% due to the tufting process so please specify the maximum or minimum dimensions when ordering the carpet or rug. For carpet installation, please allow extra 5-10% for fitting tolerance, depending on the room's size and shape.

Please note that variations in colour and texture may occur between batches of yarn and dye baths. All carpets and rugs, irrespective of their colour or finish, are subjected to shading and cut pile carpets may be subject to pile reversal which is not a manufacturing fault, but an inherent characteristic of these flooring surfaces.

SIZE

Sheffield rug is made in the custom size of your choice.

MOST COMMON RUG SIZES are 2000 x 3000 mm, 2500 x 3500 mm, 3000 x 4000 mm, 2000 mm diameter round, 2500 mm diameter round, 800 x 4500 mm (runner size).

CARE ADVICE

It is common for every new wool rug to shed fibers so please do not be alarmed. The majority of the shedding will occur in the first few months.

Do not rub fresh stains as rubbing only pushes the stain deeper into the fibers. Make sure to attend to any spills immediately, and blot up liquids with plenty of paper towels. Regular vacuuming is the most efficient way to remove surface dust and prevent build-up of material that could harm the carpet. We recommend cleaning the carpet by professional carpet cleaners every 18 months. Cleaning by hot water extraction (steam cleaning) can produce excellent results provided that it is carried out by a competent operator.

Make sure to rotate rugs regularly to ensure even wear and protect them from prolonged periods of direct sunlight.